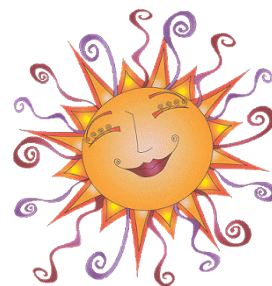


Lodge Village LES COUPS DE SOLEIL

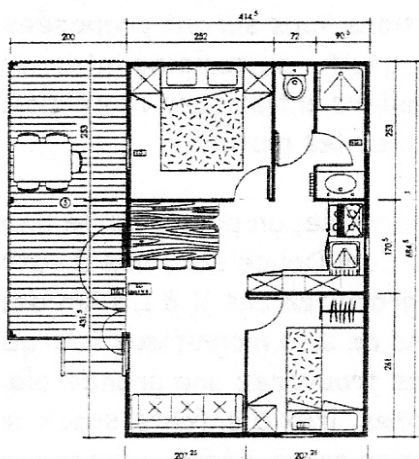


6 chalets de 4/6 people Equipped with: 1 double bed room, one single bed superposed to a double bed room, one living room (with a coach bed), a kitchen space with gas cooking, fridge, microwave, plates and dishes for 6 people, a bathroom with shower, blankets, pillows, roofed terrace, garden tables and chairs, private parking place. Please think of bringing your sheets: 3 double bed and one single bed (be careful, there is place for seven, but the maximum capacity is 6)



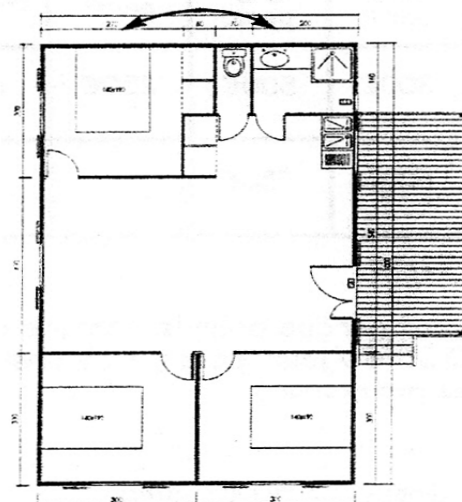
1 chalet de 6/8 people. Equipped with: 2 double bed room, 2 single bed room, one living room (with a coach bed), a kitchen space with gas cooking, oven, fridge, freezer, microwave, dishwasher, washing machine, plates and dishes for 8 people, electric coffee machine, bathroom with shower, blankets, pillows, roofed terrace, garden tables and chairs, private parking place. Please think of bringing your sheets: 3 double bed and 2 single bed

chalet 4/6 pers.



Surface totale : 38,4 m²
Intérieur : 28,4 m²
Terrasse : 10 m²

chalet 6/8 pers.



Surface totale : 70 m²
Intérieur : 60 m²
Terrasse : 10 m²



TARIFS

In high season, rental from **sunday to sunday**

Week-end **Pentecôte** et **Ascension** : **Package 3 nights required**

	Chalet 4-6 peop.		Chalet 6-8 peop.		Room of 70 m2
Low season	Week	300 €	Week	450 €	150 €/day
	Weekend	140€	Weekend	180 €	
Shoulder period	550 €		700 €		150 €/day
High season	680 €		850€		
Add. Heating	From November to March : 10 €/lodge/day day and 30€/day for room				
Cleaning	40 €		50 €		70 €
Sheets Rental	<u>Double</u> : 8 €/set			<u>Simple</u> : 7 €/set	
Taxe de séjour	0.40 € / day / person over 13 years (subject to change) (collected on behalf of the town)				

Low season : from 04/09/2011 to 01/07/2012

Shoulder period : from 26/08/2012 to 02/09/2012

High season : from 01/07/2012 to 26/08/2012

